

Brushed Lines | LVT

Interface®

地面是最终的受影响者。即使是一个绝对工业化的空间，处处显露出大自然的痕迹。磨损的边缘。有机的形式。暗沉的颜色。此时此刻，我们脚踏实地踩在地板上，感受彼此。

我们能否使用不同的材料达到同样的效果呢？

Brushed Lines的扩散性纹理让人们想起熟悉的坚硬表面，可以捕捉到光线在地板上闪闪发光。精巧的设计涵盖22种纯色调，包括温馨和炫酷的中性色，以及泥土般的矿物色调。Brushed Lines从原始和自然的主题中汲取灵感，在一定的空间内，展现出现代精致感。

带有SoundChoice™底背的Pair Brushed Lines LVT与英特飞模块地毯结合使用，将硬质及柔软的条形、方形地毯完美结合，打造浑然一体的地板设计方案。英特飞模块化地板让您可以在不同平面间轻松切换，无需过渡地带。

Brushed Lines LVT可以通过我们的ReEntry™项目实现全面回收，并包含极大比例的可回收材料。作为全球产品系列之一，我们销售的所有地板产品——模块地毯、LVT和橡胶产品均达到了碳中和水平。让地面更美观。让地球更健康。

碳中和地材™

Earth is the ultimate influencer. Even in the most industrial of spaces, we find traces of the natural world. Worn edges. Organic forms. Dusty colors. They ground us, connect us to the here and now.

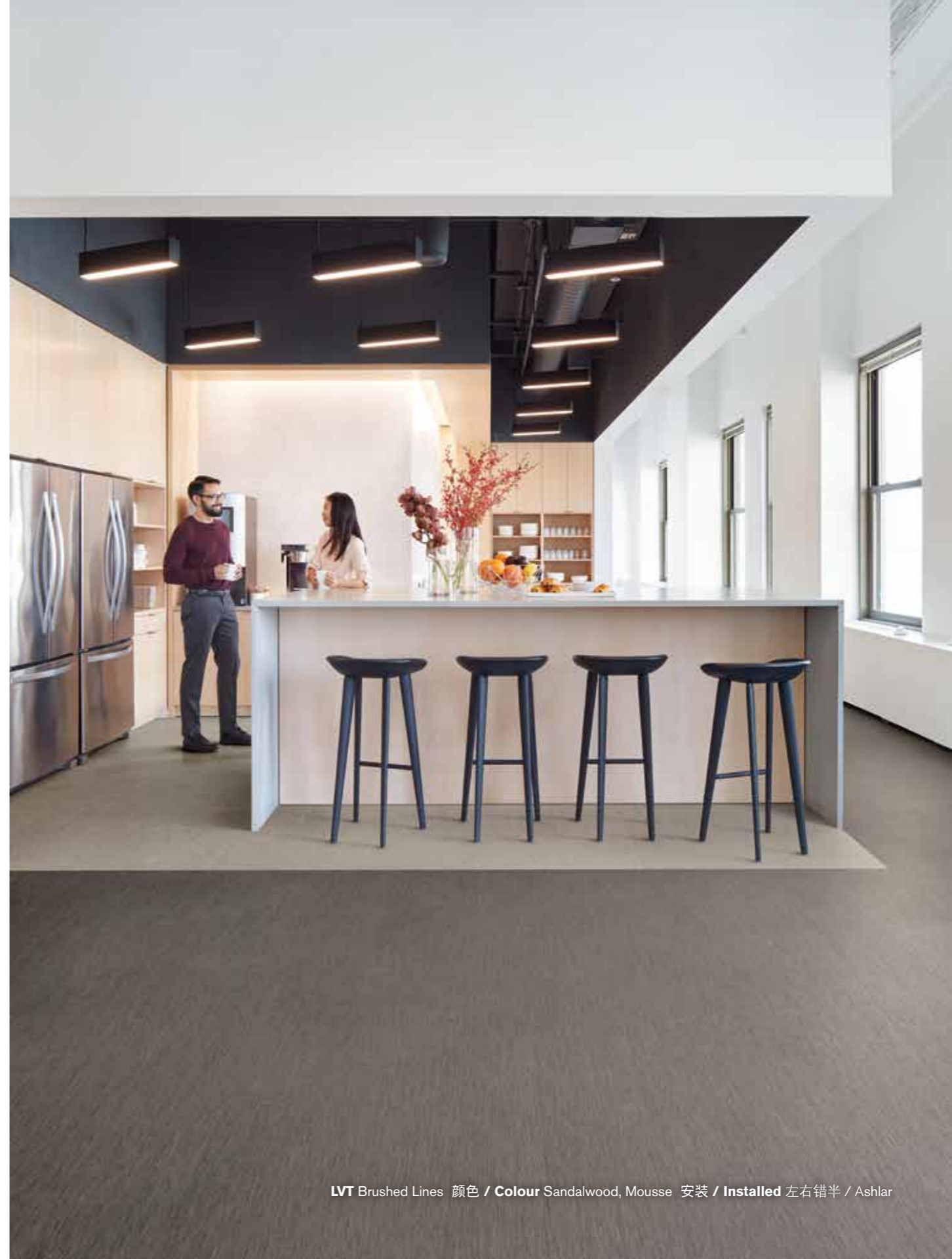
Could we achieve that same effect with different materials?

The diffused linear texture of Brushed Lines evokes the familiar qualities of hard surfaces with a light-capturing quality that sparkles on the floor. Its subtle design features 22 solid colors ranging from warm and cool neutrals to pops of earthy, mineral-like tones. Given space, Brushed Lines delivers modern refinement inspired by raw and natural motifs.

Pair Brushed Lines LVT with SoundChoice™ backing with Interface carpet tiles for an integrated flooring system of hard and soft in planks and squares. Interface modular floors allow you to move from surface to surface without the need for transition strips.

Brushed Lines LVT is fully recyclable through our ReEntry™ program and contains a significant percentage of recycled content. As part of our global portfolio, all of the flooring products that we sell - carpet tile, LVT and rubber - are carbon neutral. Impactful on the floor. Impactful on the planet.

Carbon Neutral Floors™





LVT Brushed Lines 颜色 / Colour Celadon, Deep Cobalt 安装 / Installed 左右错半 / Ashlar



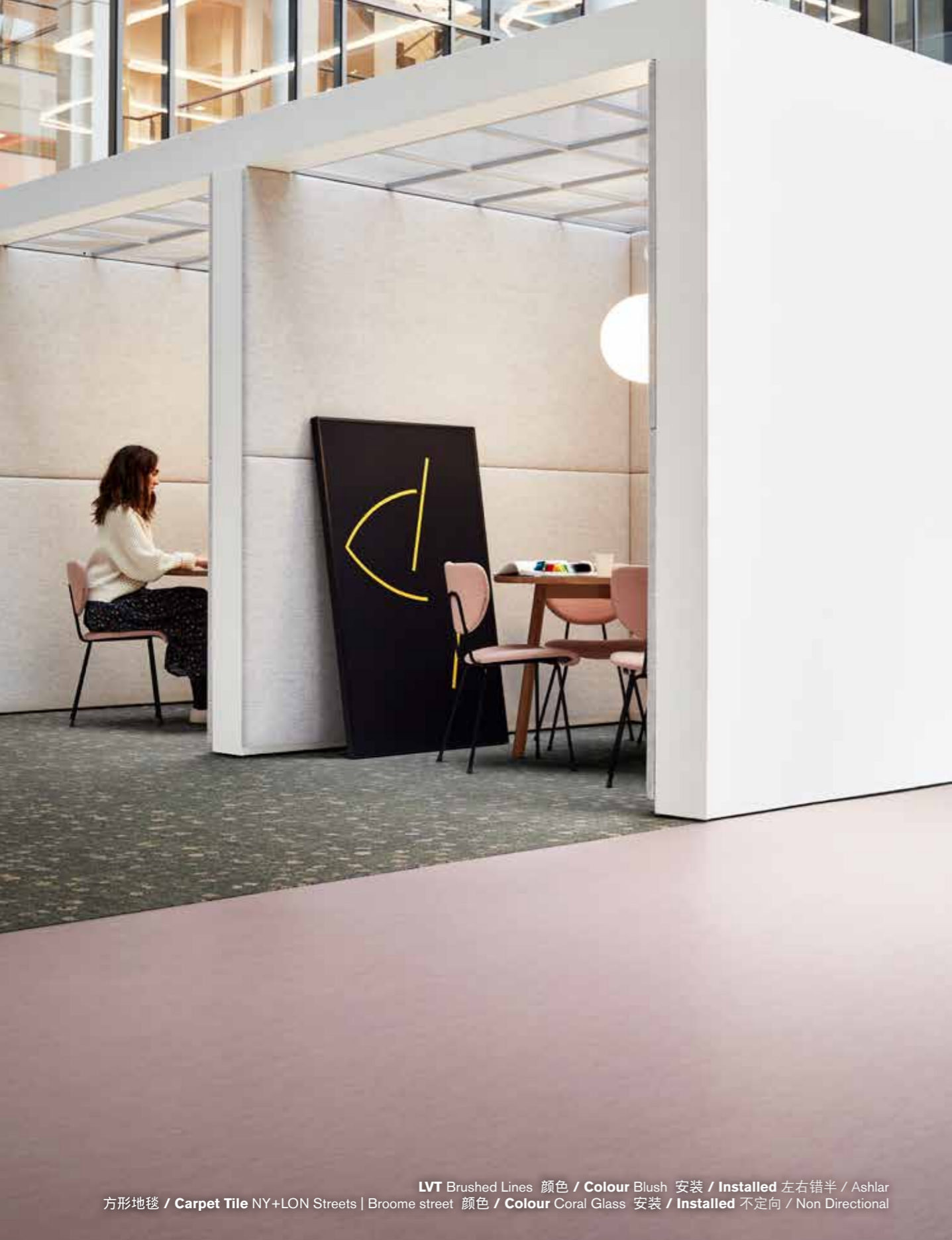
LVT product Brushed Lines 颜色 / Colour Alabaster, Rouge 安装 / Installed 左右错半 / Ashlar
方形地毯 / Carpet Tile NY+LON Streets | Wheler Street™ 颜色 / Colour Brown Square 安装 / Installed 顺铺 / Monolithic



LVT Brushed Lines 颜色 / Colour Graphite 安装 / Installed 左右错半 / Ashlar



LVT Brushed Lines 颜色 / Colour Soft Shadow 安装 / Installed 左右错半 / Ashlar
方形地毯 / Carpet Tile NY+LON Streets™ | Reade Street™ 颜色 / Colour Iron Plate 安装 / Installed 顺铺 / Monolithic



LVT Brushed Lines 颜色 / Colour Blush 安装 / Installed 左右错半 / Ashlar
方形地毯 / Carpet Tile NY+LON Streets | Broome street 颜色 / Colour Coral Glass 安装 / Installed 不定向 / Non Directional



LVT Brushed Lines 颜色 / Colour Alabaster 安装 / Installed 左右错半 / Ashlar
方形地毯 / Carpet Tile NY+LON Streets | Broome street 颜色 / Colour Teal Glass 安装 / Installed 不定向 / Non Directional
方形地毯 / Carpet Tile NY+LON Streets | Mercer street 颜色 / Colour Graphite Circle 安装 / Installed 顺铺 / Monolithic

Brushed Lines™ 色系 / Colourline



A016-01 Talc



A016-07 Powder



A016-13 Blush



A016-19 Eucalyptus



A016-02 Alabaster



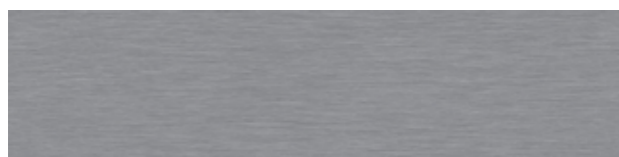
A016-08 Sandalwood



A016-14 Honey



A016-20 Teal Oxide



A016-03 Mist



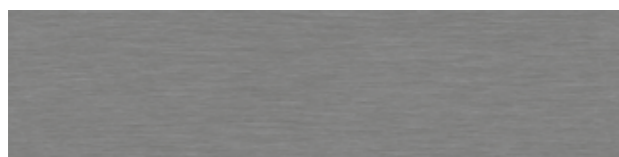
A016-09 Paraffin



A016-15 Henna



A016-21 Arbella



A016-04 Galena



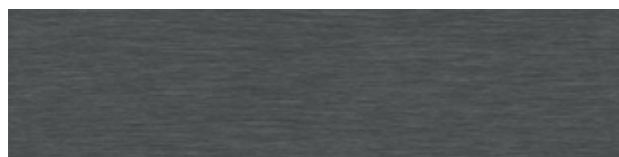
A016-10 Bisque



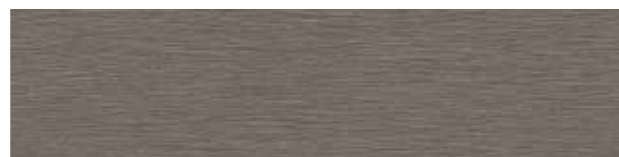
A016-16 Rouge



A016-22 Deep Cobalt



A016-05 Graphite



A016-11 Mousse



A016-17 Dew



A016-06 Kohl



A016-12 Soft Shadow



A016-18 Celadon

英特飞弹性模块Sound Choice™
LVT地材和模块地毯，实现硬质
与软质表面的无缝过渡。无需
任何过渡条。

Interface Modular Resilient Sound
Choice™ LVT and Modular Carpet
allow you to seamlessly move from
hard to soft surfaces. No transition
strip needed.

综合一体化

告别过渡嵌条与双层铺装。我们的弹性模块地材可与我们的模块地毯搭配使用。产品大小和高度相互兼容，与模块地毯相结合，形成嵌套地毯或者相邻区域，无需任何过渡地带。此外还可以省去多层铺设的材料费用，从而节省成本。

高度灵活

打造持久的独特外观。英特飞LVT弹性模块地材可以延长地材的使用寿命。从拖地等简单维护到有选择性地更换损坏部分，让地材经得住时间的考验，轻松营造美观舒适的环境。

循环利用

地材不再需要填埋。LVT弹性模块地板的生产原料全程把控，可以通过ReEntry®计划回收，用于我们的GlasBac™再生底背中。

降噪

减少干扰。选用英特飞带有Sound Choice™底背的LVT弹性模块地材，打造正能量空间™，减小噪音和楼层之间的声音传播，彰显一流性能。

Integrated System.

Say goodbye to transition strips and doubling up. Our modular resilient floorings are made to work as a system with our modular carpet tile. The compatible size and height of our products allows you to integrate modular carpet for an inset rug or an adjacent field – no transition strip required. You'll avoid doubling up on materials and save cost.

Real Flexibility.

Create a unique look that lasts. Interface modular resilient LVT makes it easy to extend the life of your floor. From simple maintenance like damp mopping to selectively replacing damaged tiles, your flooring investment will stand the test of time - beautifully and effortlessly.

Circular System.

Keep flooring out of the landfill. Our modular resilient LVT is produced with a controlled material stream so it can be reclaimed and recycled into our GlasBac™RE recycled content backing through our ReEntry® program.

Noise Reduction.

Less distractions. Interface is helping create **+Positive spaces™** with our LVT with Sound Choice™ backing, offering you best-in-class performance for reduced impact sound and floor to floor sound transmission.

从上到下，性能始终如一

1. Ceramor® 涂层。最大程度减少日常磨损与刮擦。
2. 耐磨层。优质耐磨层，弹性和性能可保持15年。
3. 印刷薄膜层。呈现天然材质以及英特飞创新设计的出色视觉效果。
4. 核心片材。坚固的芯材厚度，减少下方透印。
5. 玻璃纤维。增强尺寸稳定性和灵活性的可控度。
6. 核心片材。坚固的芯材厚度，减少下方透印。
7. Sound Choice™。带来舒适和优异的隔音效果。



High Performance from Top to Bottom.

1. Ceramor® Coating. Minimizes everyday scratching and scuffing.
2. Wear Layer. High quality layer enabling 15 years of resilience and performance.
3. Print Film. Provides outstanding visuals of natural materials and Interface innovative designs.
4. Core Sheet. Creates a thickness for a stronger core and reduces telegraphing from beneath.
5. Fiberglass. Adds dimensional stability and controlled flexibility.
6. Core Sheet. Creates a thickness for a stronger core and reduces telegraphing from beneath.
7. Sound Choice™. Provides comfort and superior acoustic performance. standards for indoor air quality. Interface LVT is FloorScore® Certified, assuring very low emissions of VOCs.

第三方认证

碳中和地材。英特飞在全球销售的所有地材均为已达到第三方认证的碳中和产品。我们从全局出发，实现碳中和，首先是减少我们产品中的碳足迹，其次是利用碳平衡的方式抵消剩余的部分。

环境产品声明 (EPD)。英特飞LVT产品均带有EPD认证。环保产品声明是一项基于ISO标准执行的生命周期评估而作出的有关产品成分和环境影响的综合声明。

可持续性评估。英特飞LVT产品符合NSF/ANSI 332弹性地材可持续性评估认证标准。该标准评估的是弹性地材整个生命周期带来的环境影响。

室内空气质量。所有英特飞模块地材产品均符合室内空气质量最高标准。英特飞LVT产品通过了FloorScore® 认证，确保极低的有机废气排放量。

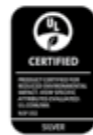
Third Party Certification.

Carbon Neutral Floors. All Interface flooring sold globally is third party verified carbon neutral. We've taken a holistic approach to achieve carbon neutrality, first through reducing the carbon footprint of our products and then using carbon offsets for the remainder.

Environmental Product Declaration (EPD). Interface LVT products are covered by an EPD. An EPD provides a comprehensive statement of product ingredients and environmental impacts based upon life cycle assessment performed to ISO standards.

Sustainable Assessment. Interface LVT meets the certification standards of the NSF/ANSI 332 Sustainability Assessment for Resilient Floor Coverings. This standard evaluates the environmental impact of resilient floor covering for its entire lifecycle.

Indoor Air Quality. All Interface modular flooring products meet the highest standards for indoor air quality. Interface LVT is FloorScore® Certified, assuring very low emissions of VOCs.



Brushed Lines™ | LVT

Product Name / Number	A016
Product Construction	High Performance Luxury Vinyl Tile
Wear Layer Thickness	0.55 mm
Total Thickness (Metric)	4.5 mm
Classification	EN 651 Class 33 (heavy contract) EN 651 Class 42 (light industrial general)
Acoustic Impact Noise Reduction	ISO 140.8 ΔLw = 16dB
Finish	CERAMOR® UV Stabilized Ceramic Bead Coating
Nominal Dimensions	25cm x 100cm

Performance Specifications

Critical Heat Flux	AS ISO 9239-1	>7kW/m2
Smoke Rate	AS ISO 9239-1	<750%.min
Size, Tolerance	ISO 24342	>400 mm < 0.35 mm
	ISO 24342	<400 mm < 0.25 mm
Dimensional Stability	ISO 23999	<0.25%
Thickness	ISO 24346	Average value + 0.20mm
Resistance to Light	ISO 105-B02	≥6
Resistance to Heat	ASTM F1514	ΔE< 8 avg Max
Resistance to Chemicals	EN-ISO 26987	Pass
Reaction to Fire	EN ISO 13501-1	Class BFI-S1
VOC Test	ISO 10580	Pass
Flexibility	ISO 24344 Method A	Pass
Static Load	ASTM F970	≤0.005" with 1500 psi
Castor chair	ISO 4918	Pass
Thermal Conductivity	EN 12667	0.16 W/mK
Static Electrical	EN 1815	<2kV
Slip Resistance	AS 4586:2014	R10

Environmental Specifications

Ingredients and Life Cycle Impacts	EPD for LVT
Sustainability Assessment	NSF/ANSI 332, Meets Certification Guidelines Contributes to IEQ: Low Emitting Materials; M&R: EPD and EPR
LEED v4	Fully Recyclable to carpet tile Backing Recycling
End of Life	

Technical Information

Installation	See Interface LVT Installation Guidelines online
Maintenance	See Interface LVT Maintenance Guidelines online
Reclamation	Recyclable through ReEntry®
Warranty	15 Year Standard LVT Product Warranty
Installation Method	Ashlar, Herringbone



Ashlar



Herringbone

Brushed Lines™ | LVT

产品名称/编号	A016
产品结构	高性能豪华乙烯地板
耐磨层厚度	0.55毫米
总厚度 (公制)	4.5毫米
分类	EN 651类别33 (公共场合) EN 651 类别42 (轻工通用)
声振降噪	ISO 140.8 ΔLw = 16dB
饰面	CERAMOR®, 紫外线稳定的陶瓷珠涂层
标称尺寸	25厘米x 100厘米

性能规范

临界热通量	AS ISO 9239-1	>7kW/m2
烟度	AS ISO 9239-1	<750%.分
尺寸、公差	ISO 24342	>400 毫米 < 0.35毫米
	ISO 24342	<400 毫米 < 0.25毫米
尺寸稳定性	ISO 23999	<0.25%
厚度	ISO 24346	平均值 + 0.20mm
耐光性能	ISO 105-B02标准	≥6
耐热性能	ASTM F1514	ΔE<8平均最大值
耐化学品性能	EN-ISO 26987	通过
防火性能	EN ISO 13501-1	类别 BFI-S1
VOC测试	ISO 10580	通过
灵活性	ISO 24344 方法A	通过
静载重	ASTM F970	≤0.005" 1500磅每平方英寸
滚轮磨损	ISO 4918	通过
导热性能	EN 12667	0.16 W/mK
静电性能	EN 1815	<2千伏
防滑性能	AS 4586:2014	R10

环保规范

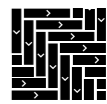
成分和生命周期影响	EPD高级弹性地板
可持续性评估	NSF/ANSI 332, 符合认证准则 有助于改善室内环境质量 (IEQ) : 低放射性材料; M&R: EPD和EPR认证
LEED v4	可通过地毯底背回收系统完全回收
产品寿命末期	

技术信息

安装	详见英特飞LVT在线安装指南
维护	详见InterfaceLVT在线维护指南
回收	ReEntry®回收项目
保修	15年标准LVT产品质保
安装方法	左右错半、人字形



左右错半



人字形

产品规格可能会受到实际生产公差的影响，且可能会随时更新，恕不另行通知。不同生产批次的少许偏差实属正常，应纳入整体安装规划的考虑范围。产品质保以生产商提供的书面质保文件为准。所有其他保证，包括但不限于有关适用于特定用途、适销性或适用性的默示保证，本公司概不负责。敬请联系您的销售代表，获得书面质保文件。

Production specifications are subject to normal manufacturing tolerances and may be changed without notice. Slight variation in colour among different production lots are normal and should be considered in the overall installation plan. Products covered by manufacturer's written warranty only. All other warranties, including without limitation any implied warranties of merchantability of fitness for particular purpose, are hereby disclaimed. Contact your representative for written warranty information.

www.interface.com.cn

上海工作室 / Shanghai Studio

英特飞中国 / Interface China
电话 / Tel: 86-21-6340 3868
www.interface.com.cn

香港工作室 / Hongkong Studio

英特飞中国 / Interface China
电话 / Tel: 852-2802 0838
www.interface.com.cn

北京工作室 / Beijing Studio

英特飞中国 / Interface China
电话 / Tel: 86-10-6590 7812
www.interface.com.cn

太仓生产基地 / Taicang Plant

英特飞中国 / Interface China
电话 / Tel: 86-512- 5373 9888
www.interface.com.cn

广州工作室 / Guangzhou Studio

英特飞中国 / Interface China
电话 / Tel: 86-139 2645 4400
www.interface.com.cn

东南亚 / South East Asia

英特飞亚洲 / Interface Asia
电话 / Tel: 65-6478 1510
www.interface.com

韩国 / South Korea

电话 / Tel: 82-2-555 1734
www.interface.com

日本 / Japan

英特飞日本 / Interface Japan
电话 / Tel: 81-3-5733 5211
www.interface.com

澳大利亚 / Australia

英特飞澳大利亚 / Interface Australia
本地免费电话 / Local toll free: 1800 804 361
www.interface.com.au

印度 / India

英特飞印度 / Interface India
电话 / Tel: 91-80-4613 1313

04/2020
SF0124T0



气候变化无可争辩。但我们可以扭转这种局面。我们的任务是落实行动。加入#气候回归计划，助力营造宜居气候。

Climate change is undeniable. And reversible. Our mission is to prove it. **Join the #ClimateTakeBack and help create a climate fit for life.**